

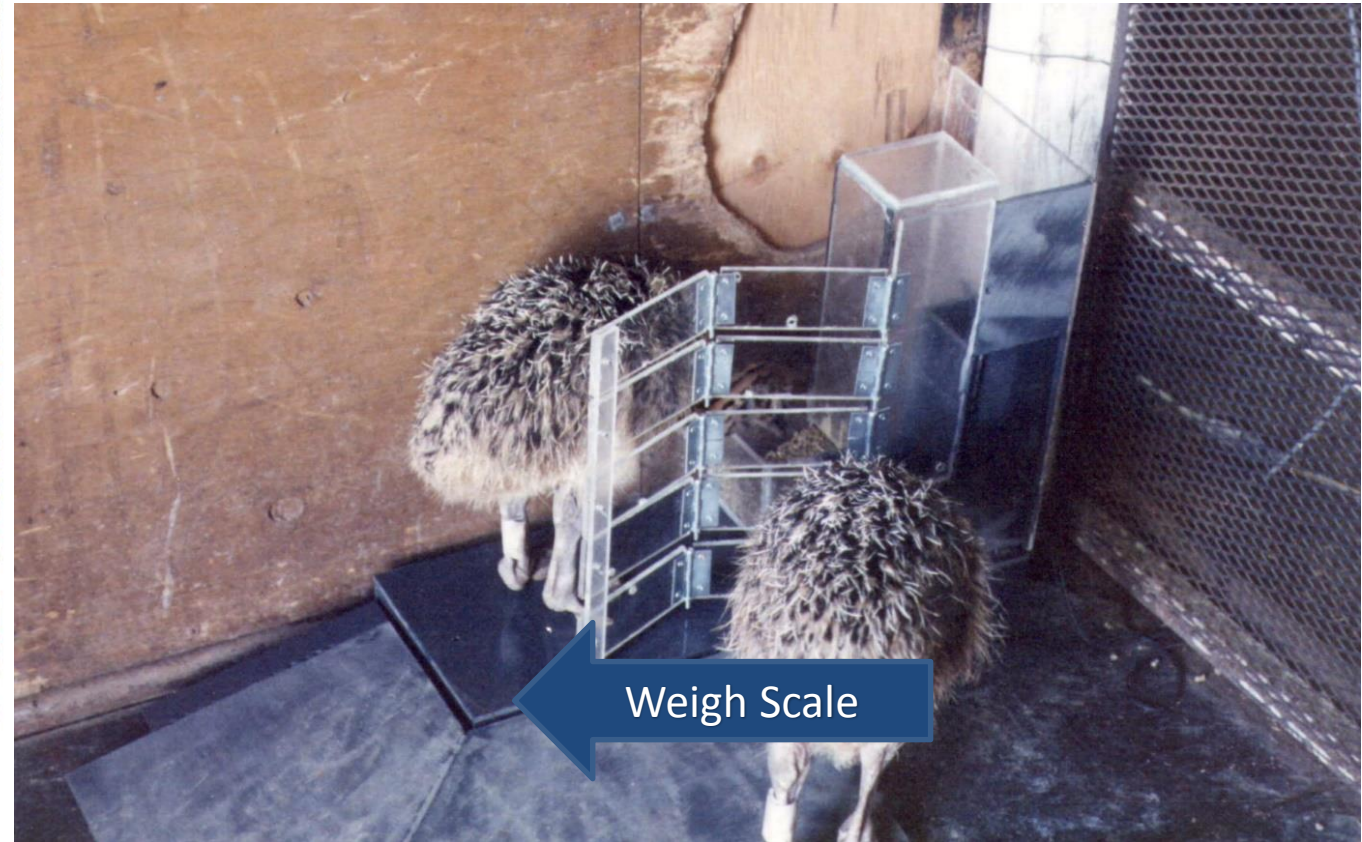


Engineers computer and animal specialists applying science and technology to improve animal well-being and farm profitability



Applications for the Livestock Production Chain

# 1990 - Measured Weight Feed & Feeding Behavior



Confinement disrupted social order - needed to measure unobtrusively

Healthy - visitation >500 times/day

Sick – visitation dropped rapidly <50 times/day



Improved survivability from 12% to >90%

# Application #1 Efficiency Measurement



## GOLD STANDARD



*Snyder Livestock - Nevada*

- Animals RFID ear tagged
- RFID antenna in trough rim
- Trough on load cells – 3 gm
- Tag & feed measured many times each second
- Data audited daily – SPC
- Always connected to GrowSafe

# 1<sup>st</sup> App – Genetic Selection Feed Efficiency – Beef

Rancho da Matinha - Brazil



US Patent No. 8,930,148  
US Patent No. 6,427,627  
US Patent No. 6,494,197

Residual Feed Intake (RFI)

$$\text{Measured FI} - \text{Expected FI} = \text{RFI}$$

Selection for RFI reduces<sup>1</sup>

- Feed Intake - 12%
- Methane - 30%
- Manure NPK - 17% <sup>1</sup> Agrifacts

Cattle Per Animal Savings:

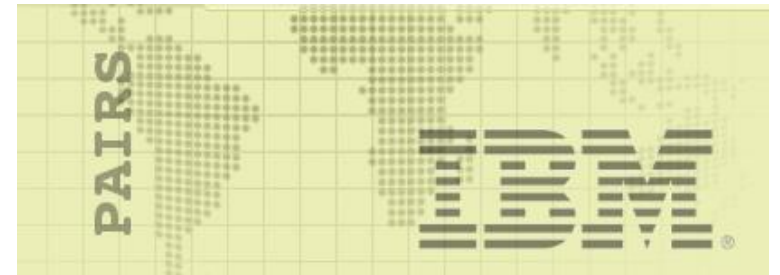
Feedlot = \$60+ per 120d

Cow Herd – 10 more animals /100

System Cost On Farm = \$15 per animal

# Enhanced Breeding Selection

- GrowSafe curating all “allowed” historical client data
- Data processed through standardized server analytic method
  - Site-specific climate data
  - Diet parameter inclusion
  - Daily RFI values using GSB weights
  - Advanced behaviour trait inclusion
  - Audited data to Genetic evaluation



Whole farm efficiency and greenhouse gas mitigation.

# 2<sup>nd</sup> App – GrowSafe Beef<sup>®</sup> - Feedlot

Kunz Feedyard - Alberta



Data acquired when animal drinks:

- Non-invasive
- Weight, water intake and watering behavior measured

Feedlot Cost:Benefit = \$1:\$6

Always Connected to GrowSafe



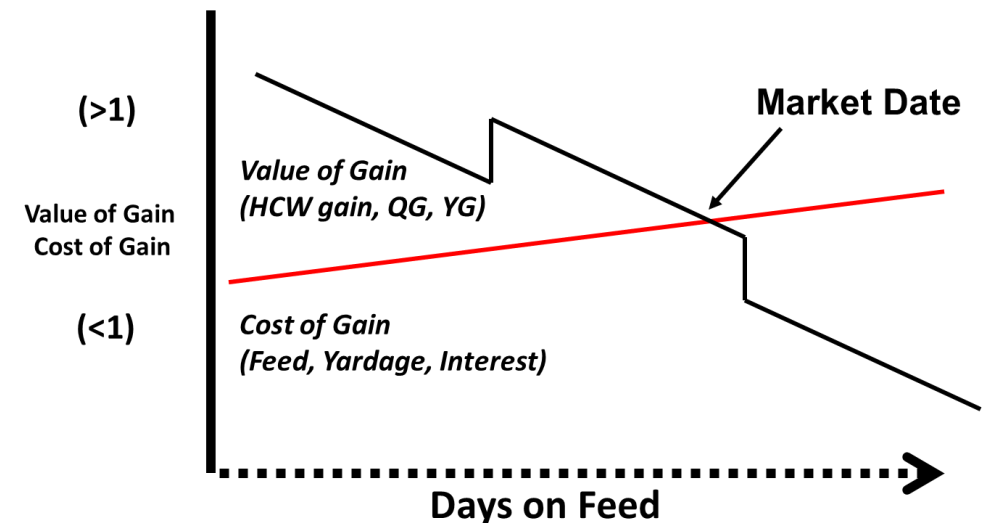
← RFID Antenna

- Measures partial body
- Conversion partial to full body and market weight highly accurate



# Predictive 'Learning' Algorithms

- API's Integrate feed/treatment/harvest data
- Reports daily weight and growth statistics
- Accurately forecasts future feed intake and weight
- Digitally profiles animal health
  - ID sick 4d+ adv clinical symptoms
  - 24 hrs adv body temp change
- Determines optimum market time
  - When cost begins to exceed value



More Data – More We Learn

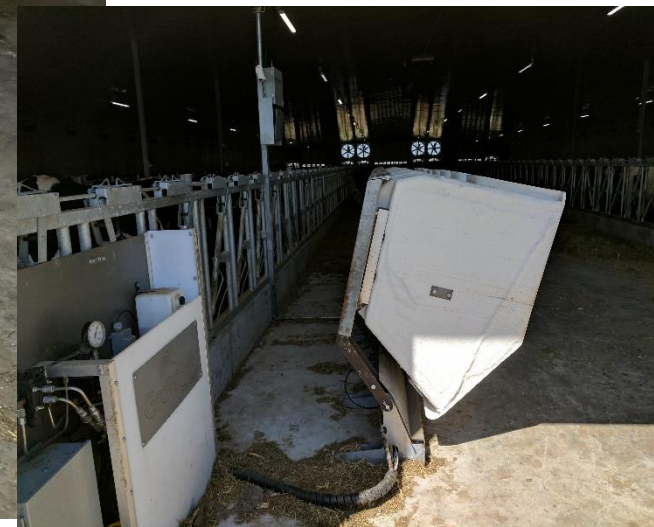
# 3<sup>rd</sup> App Grazing Cattle Measurement



Patent Pending

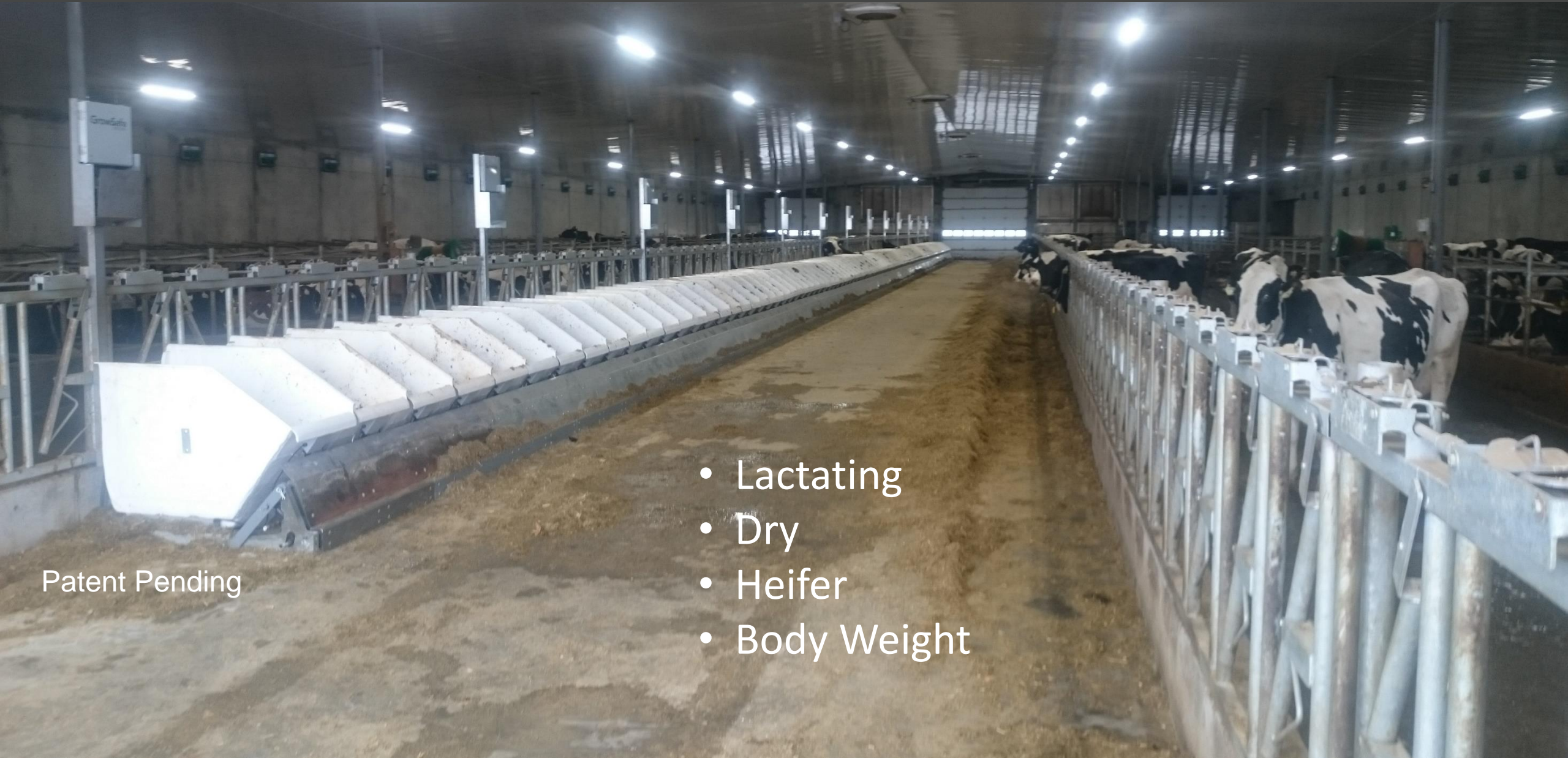
Integrating animal, plant, weather & soil data

# 4<sup>th</sup> App Dairy On Farm Phenotyping



Optimize  
production,  
fertility,  
feed  
efficiency,  
animal  
health and  
well being

# 2017 - On Farm Phenotyping – Dairy



Patent Pending

- Lactating
- Dry
- Heifer
- Body Weight

# Why So Much Data ?

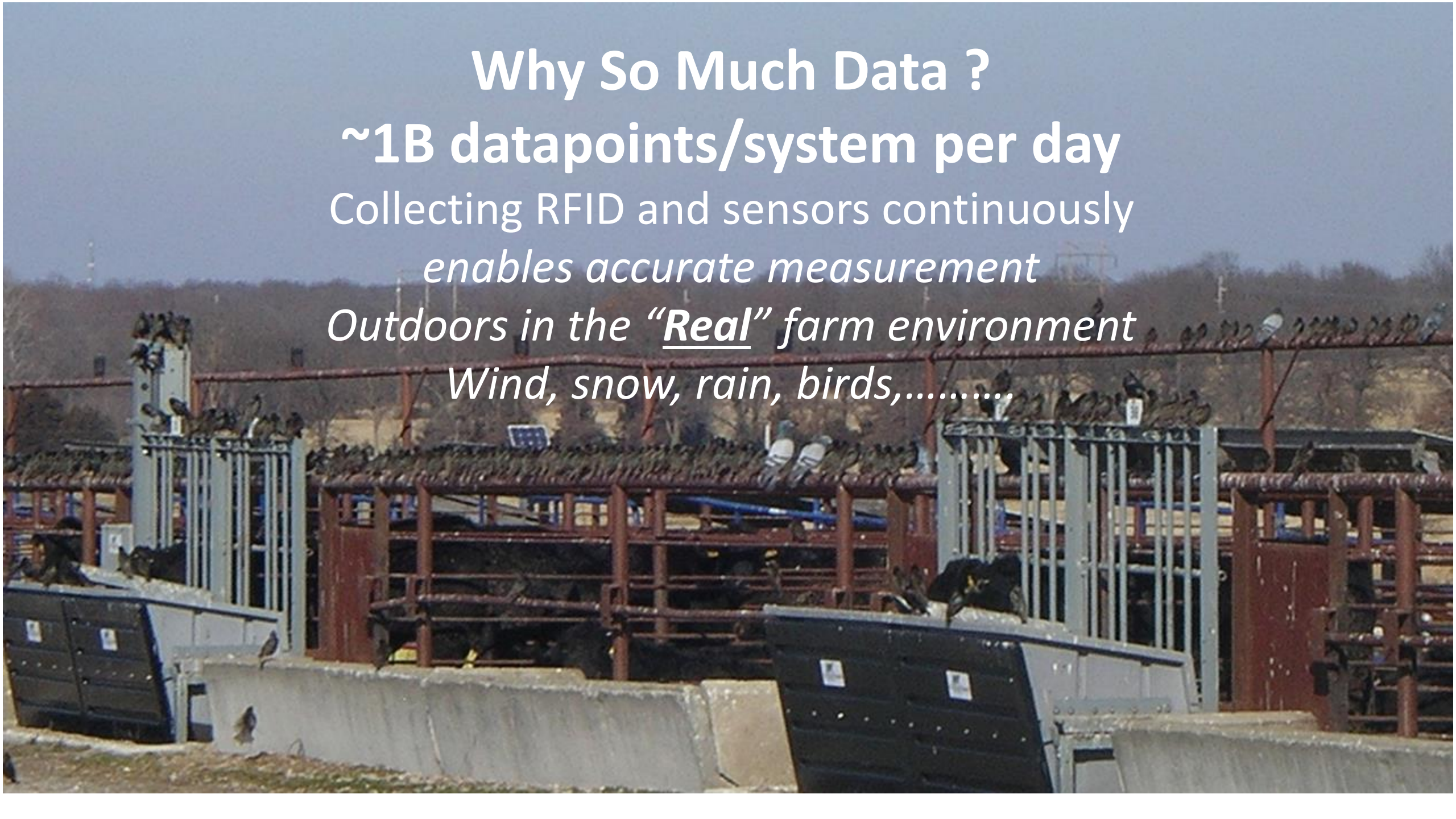
~1B datapoints/system per day

Collecting RFID and sensors continuously

*enables accurate measurement*

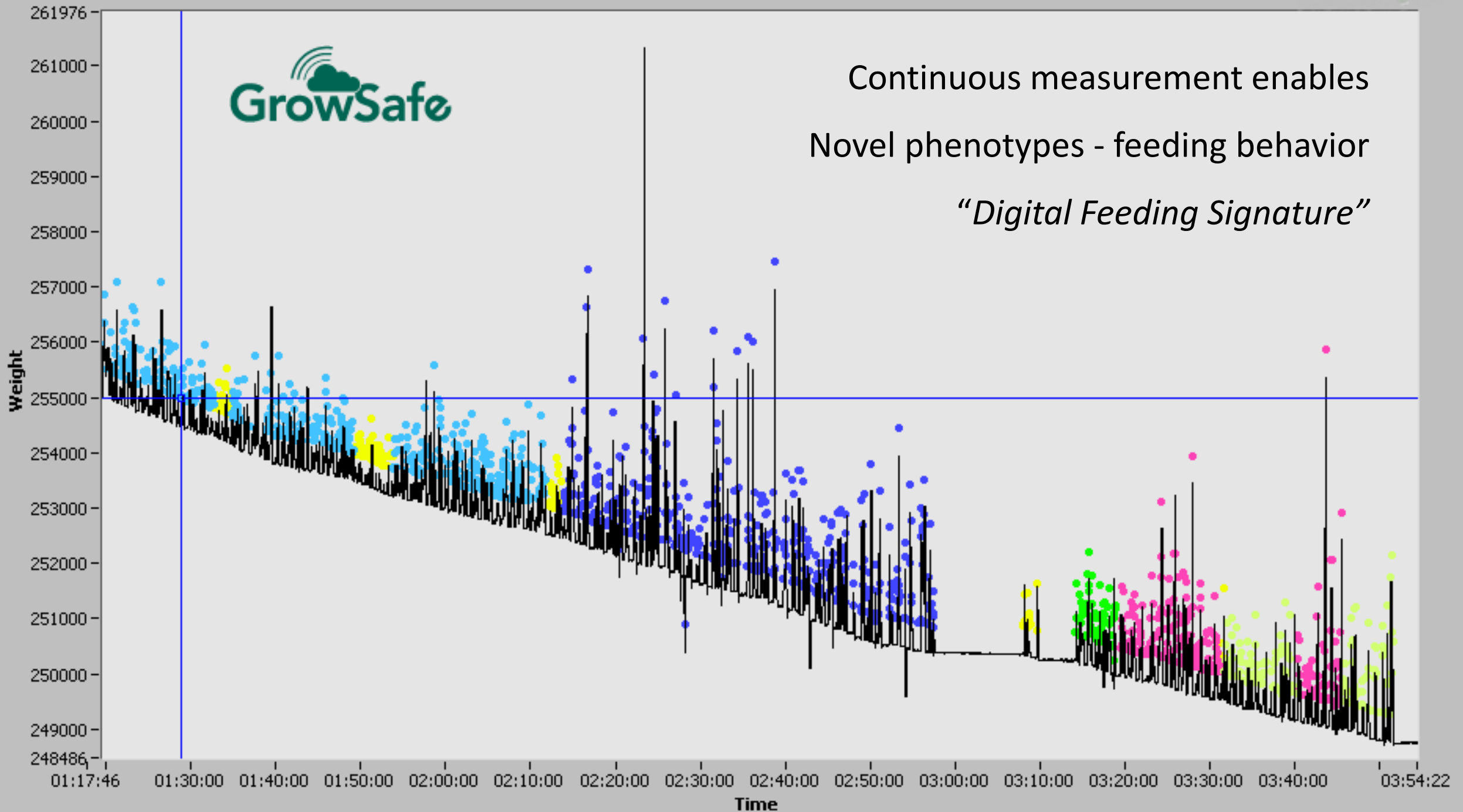
*Outdoors in the “Real” farm environment*

*Wind, snow, rain, birds,.....*





Continuous measurement enables  
Novel phenotypes - feeding behavior  
*"Digital Feeding Signature"*



# Automated Phenotyping Platform

---

- Measure, monitor analyse complex traits such as efficiency, growth, stress, adaptability, management, environmental tolerance, disease, metabolism
- Explicit continuous data
  - system and animal statistics, subjective and objective observations, descriptions of management protocols all in a **standardized** format

# Genomic predictors not the complete picture!

---

How well a genomic test improves the accuracy of an EPD is related to amount of genetic variation marker test explains.

**“No QTL for RFI explained > than 2.5% of the genetic variation”**

**In the age of the genotype phenotype is king!**

*Source 2016: (Genome wide association of feed intake related traits in beef cattle – feed efficiency consortium)*





### Genetics

50 Day RFI Test  
Dairy Calf - March

### Rearing

Housed April-June

### Growing

Grass July-Dec  
Housed Jan-June

### Finishing

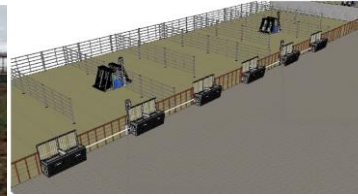
Housed July-August

### Processing

Harvest Data

### Retailer

Consumer Taste



## Improved

Animal Welfare  
Farm Profitability  
Verification  
Quality & Security  
Sustainability

Increased food production  
Habitat preservation  
Resource conservation  
Rural economic stability

### Measure

ID/Day/Time (Sec.)  
Pen Location (GPS)  
Feed/Water/Medication  
Feedbunk Delivery  
Environment  
Breed/Pedigree  
Biologic/Genomic  
Forage/Soil Parameters

### Monitor

Consumption Patterns  
Animal Health  
Animal Performance  
Behavior  
Growth & Deposition  
System Performance  
Stocking Rates

### Predict

Efficiency Traits  
Growth Traits  
Disease Traits  
Market Weight  
Market Date  
Market Outcome  
Carbon Value

### Optimize

Breeding Decisions  
Market Value  
Advance Logistics  
Conservation Offsets  
Asset Management  
Prescription Feed  
Prescription Treat



Readable by anyone with "permission" (digital key)

Copyright 2017 All Rights Reserved

## Our Pride:

Development of unique patented phenotyping technology – 5 continents

Leveraging research through **collaboration**

- 60+ Universities, 65+ grad students, 2400+ publications



Overnight success after 27 years R & D

 @GrowSafeBeef