

2015 Interbull Technical Workshop and Industry Meeting
February 24-25, Walsrode, Germany

Monitoring U.S. genetic evaluations for the influence of Genomic Pre-Selection

P.M. VanRaden, J.R. Wright and T.J. Lawlor*



Update on 2013 talk plus more

Measuring genomic pre-selection in theory and in practice

Paul VanRaden and Jan Wright

Animal Improvement Programs Lab, Beltsville, MD

Paul.VanRaden@ars.usda.gov

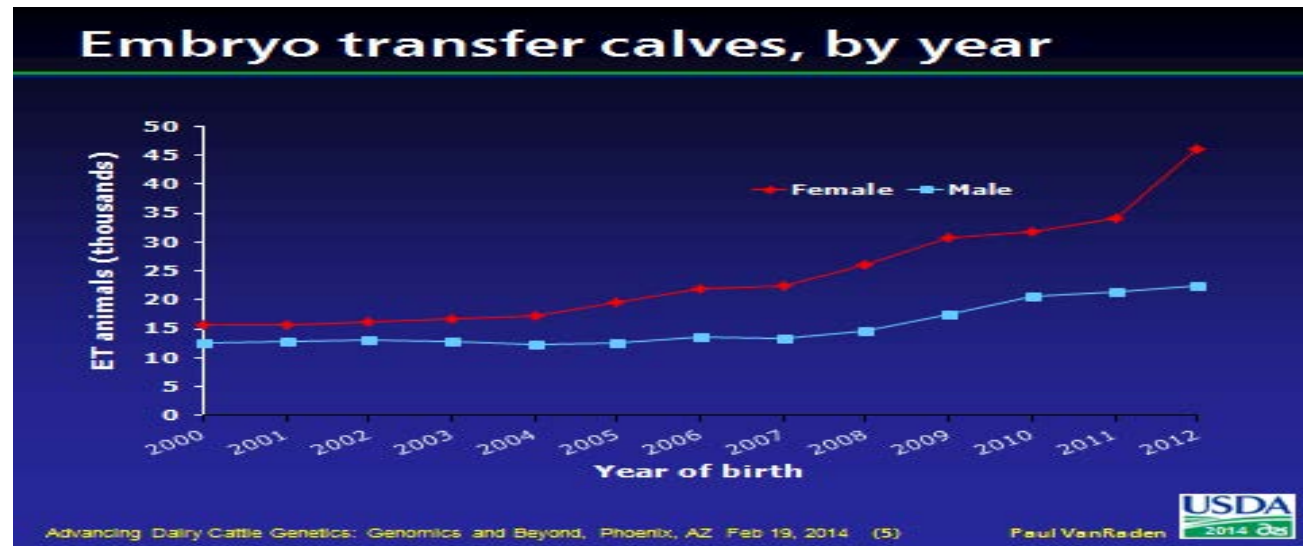
Plan to keep genetic evaluations unbiased.

- Monitor genetic evaluations for potential sources of bias from genomic pre-selection
- Short term: as we learn more - improve current procedures.
 - Prevent genomic selection from impacting our traditional evaluations.
- Longer term: Develop better genetic evaluation models.
 - Single-Step utilizing recursion to compute the inverse of the genomic relationship matrix

Lots of Genomic Testing

Genotyped				Imputed		Total
Proven Male	Female with records	Young Male	Female without records	Older Female	Young Female	
26748	111685	107053	461699	3221	1499	711905

Growth in Embryo Transfer



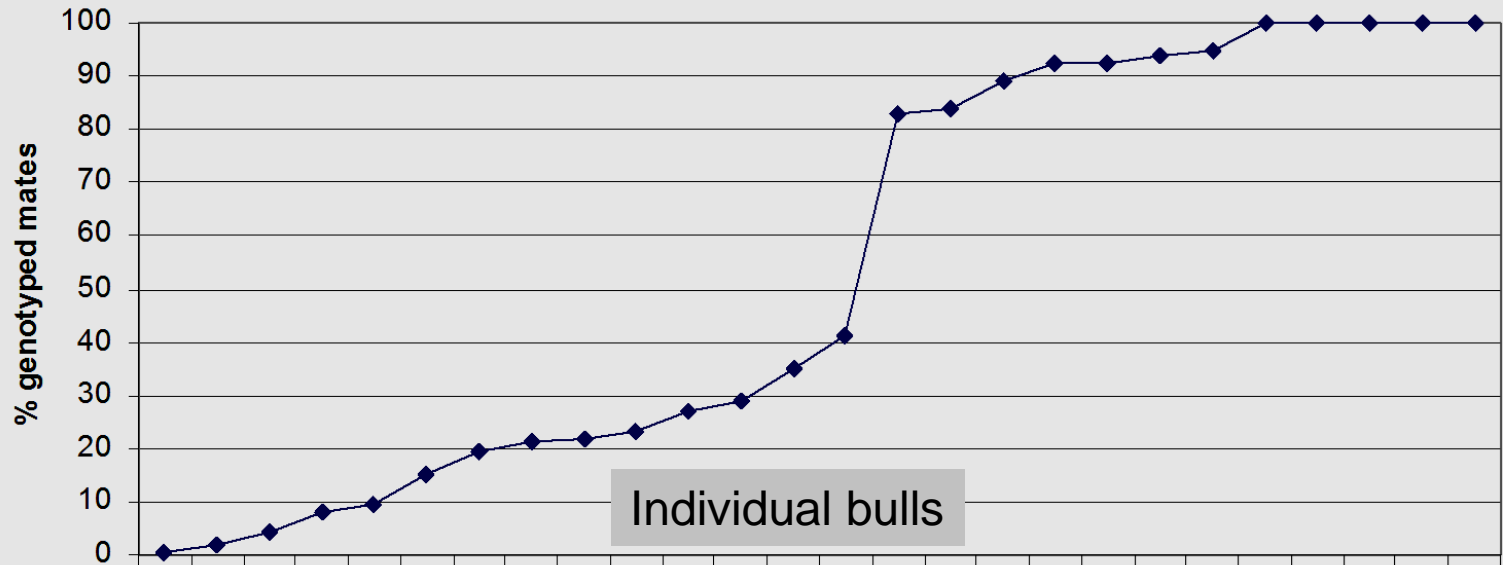
Decline in number of breeders of bulls

Bull's Birth Year		Breeders
2010 to 2012	Genomic era	459
2000 to 2006	Pre-Genomic	650

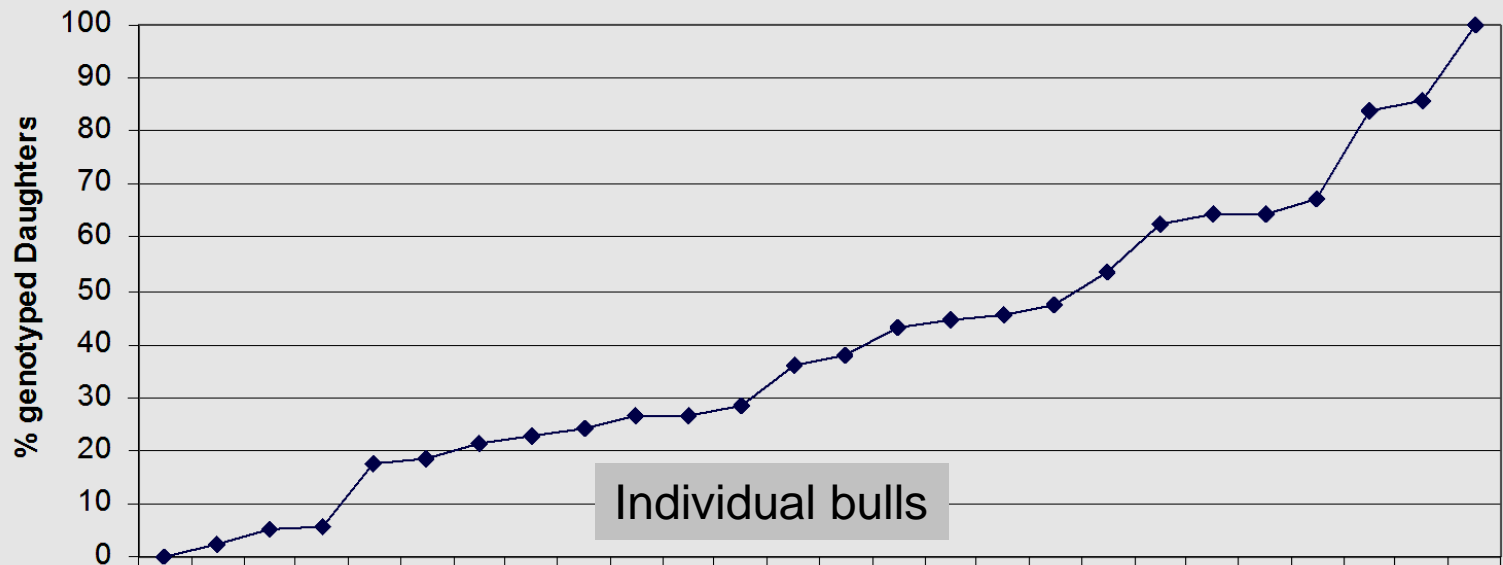
Top Proven Bulls*: Opportunity for Genomic Selection

* 10 or more
genotyped
daughters with
a record

Mates

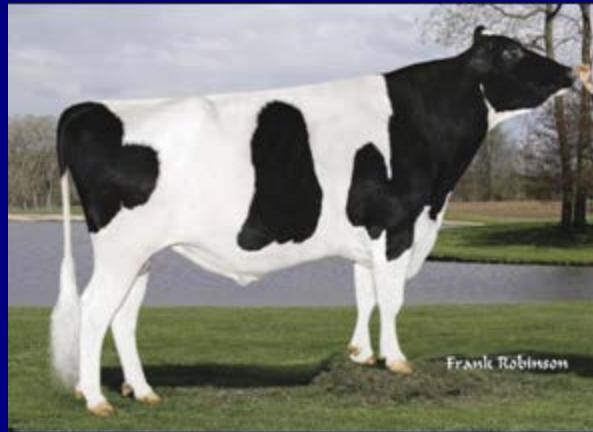


Daughters



Are some bulls being bred to “better” mates ?

- Proven bulls
 - Top 50
 - Daughters have records in 2013
 - Daughters did not have any records in 2010
 - Do Genomic PTAs of the mates differ from their Traditional PTAs?



Proven bulls from 2013 talk

Genomic Pre-Selection of mates was small

Group 1 Realized Mate Bias

Trait	Mean	SD	Min	Max
NM\$	2	4	-5	13
Protein	0	0	-1	1
Prod Life	.0	.0	.0	.1
Dtr Preg Rate	.0	.0	.0	.1
SCS	.00	.00	-.01	.01
Final Score	.00	.01	-.04	.02
Udder Depth	.00	.01	-.02	.02

Top 50 Proven bulls

August 2013

- Daughters have records in **2013**
- Daughters did not have any records in **2010**

December 2014

- Daughters have records in **2014**
- Daughters did not have any records in **2011**

Do **Genomic PTAs** of the mates differ from their **Traditional PTAs**?

Changes to evaluation system (December 2013)

Genomic weighting and deregression improved

- Less weight placed on cow's Traditional PTA
- Deregress the Traditional PTAs jointly across animals
(use matrix instead of simple one at a time)
dam only gets credit for own records and non-genotyped progeny, *not genotyped sons or daughters*

Modifying the deregression procedure can reduce some of the potential source of bias

Little evidence of Genomic Pre-Selection

August 2013

December 2014

Group 1 Realized Mate Bias

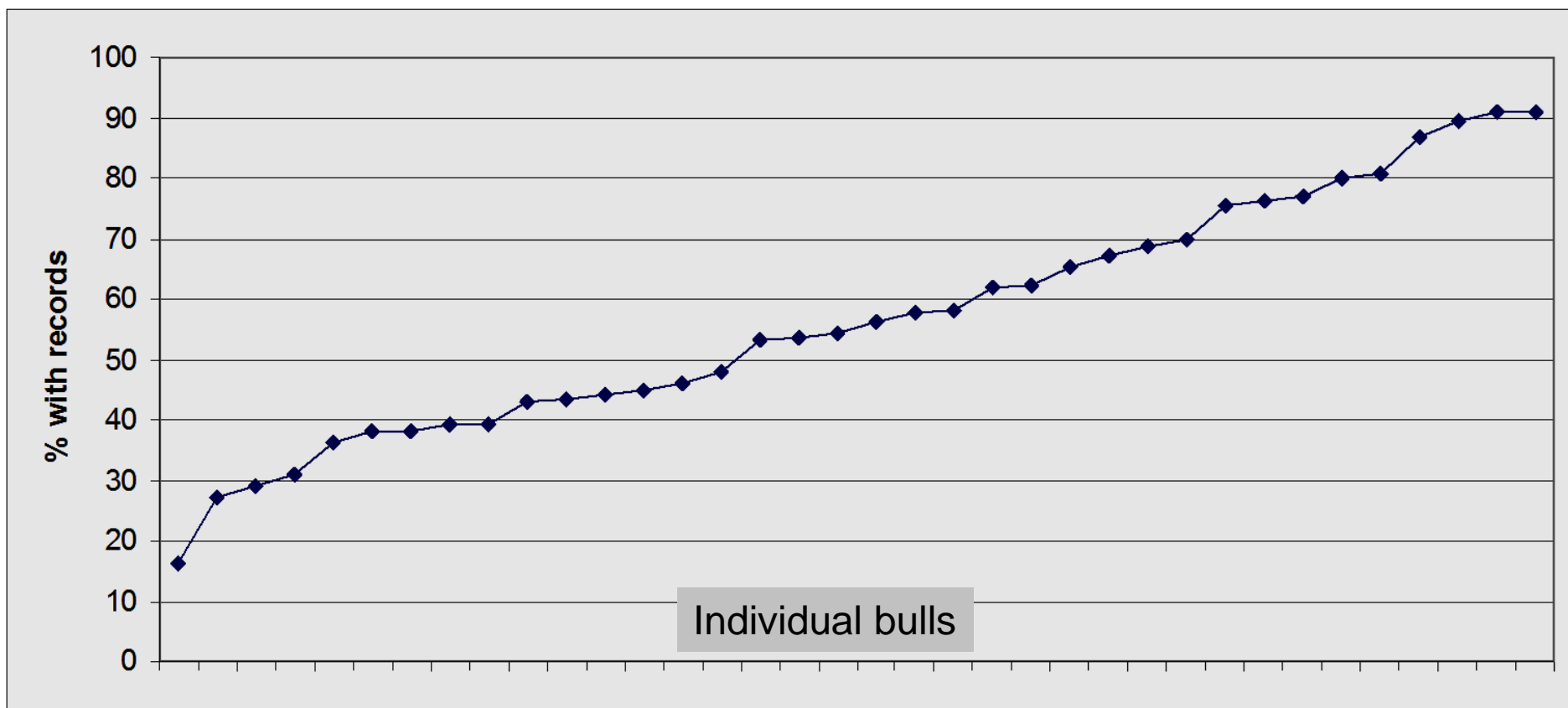
Trait	Mean	SD	Min	Max
NM\$	2	4	-5	13
Protein	0	0	-1	1
Prod Life	.0	.0	.0	.1
Dtr Preg Rate	.0	.0	.0	.1
SCS	.00	.00	-.01	.01
Final Score	.00	.01	-.04	.02
Udder Depth	.00	.01	-.02	.02

Mean	SD	Min	Max
1	2	-1	8
0	0	0	0
.0	.0	.0	.2
.0	.0	.0	.1
.00	.00	-.01	.00
-.01	.01	-.05	.00
-.01	.01	-.04	.04



Opportunity to select daughters based upon early genomic results

Progeny of top 50 Proven bulls

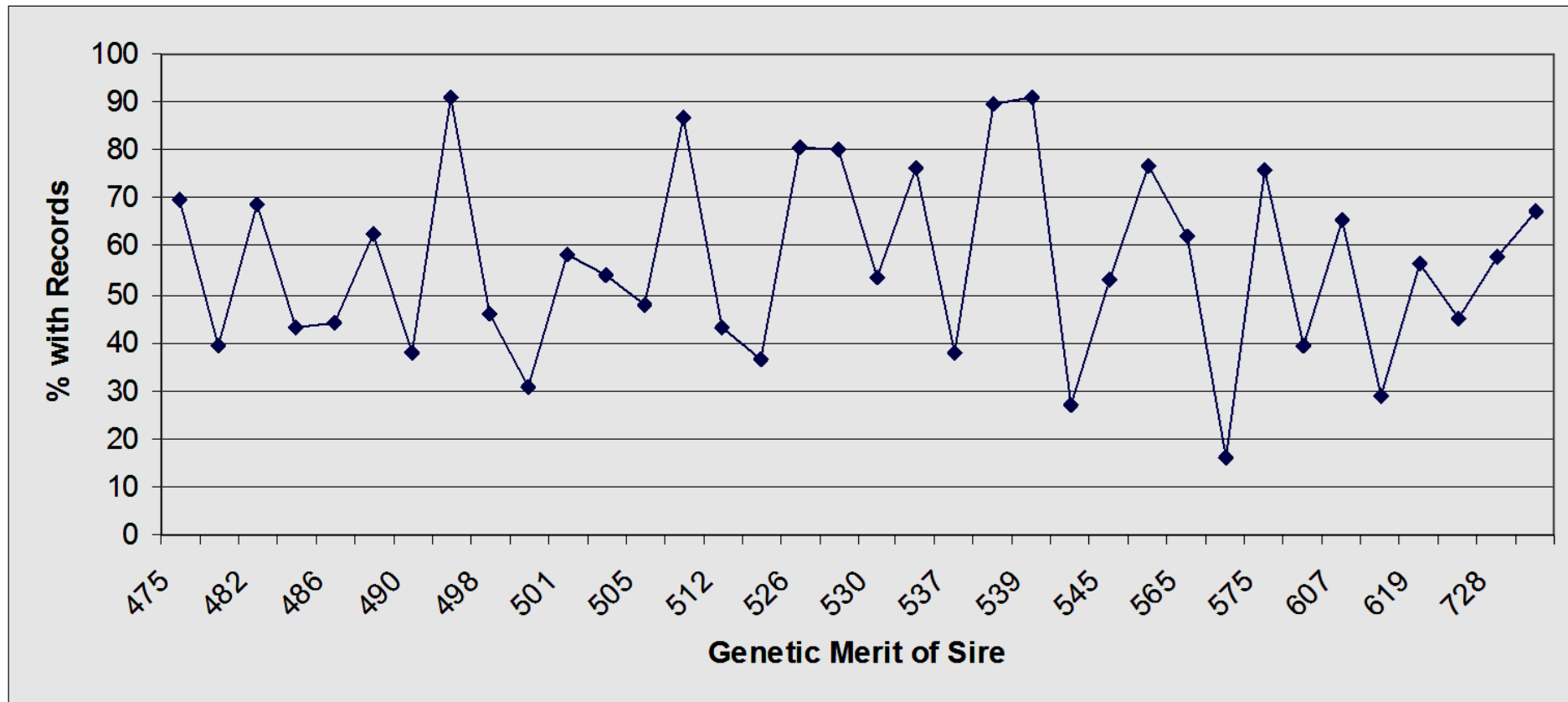


Percent genotyped daughters with Records

Did your owner prevent you from getting a lactation record due to your low genomic test?

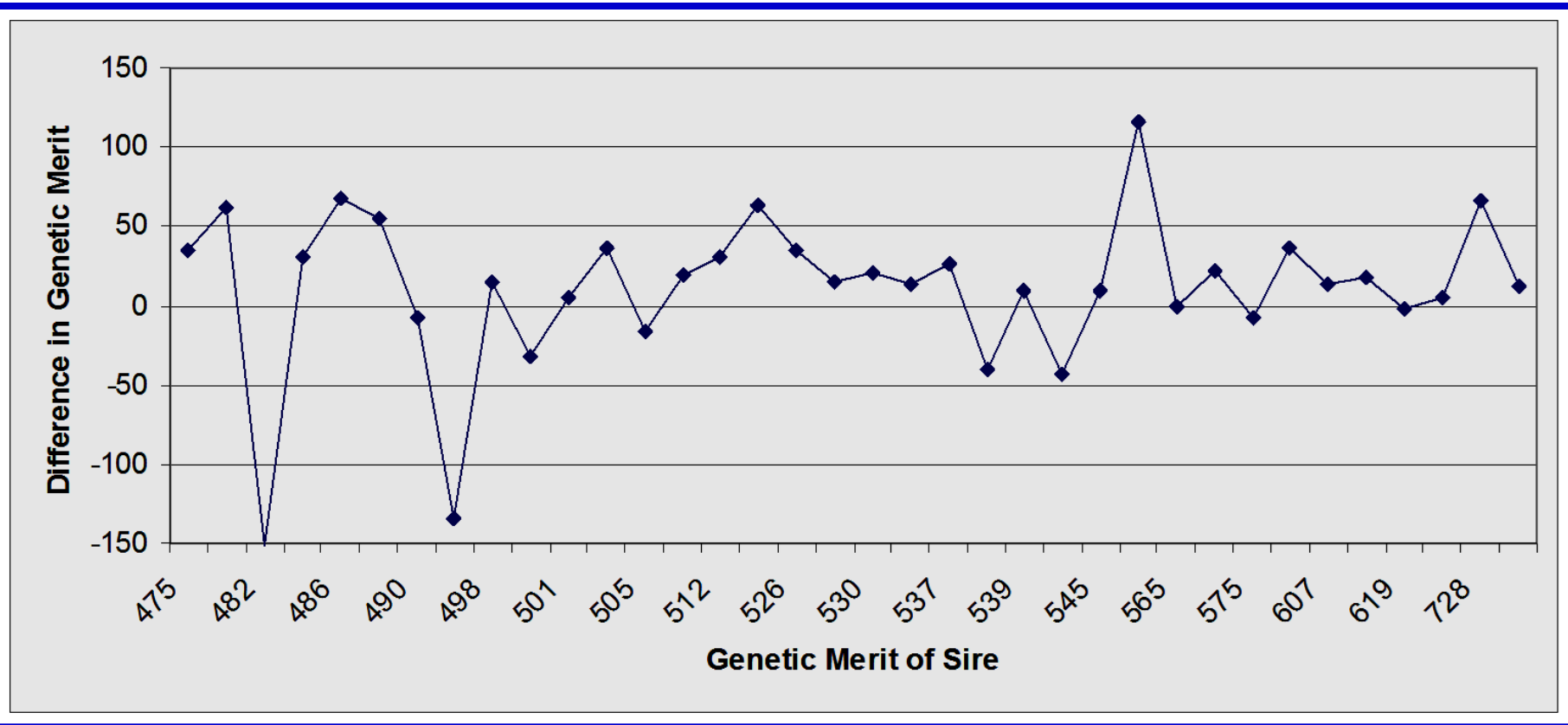


Percent daughters with records is unrelated to genetic merit of the Sire



Percent genotyped daughters with Records

Difference between groups of daughters shows little relationship with Genetic Merit of the Sire



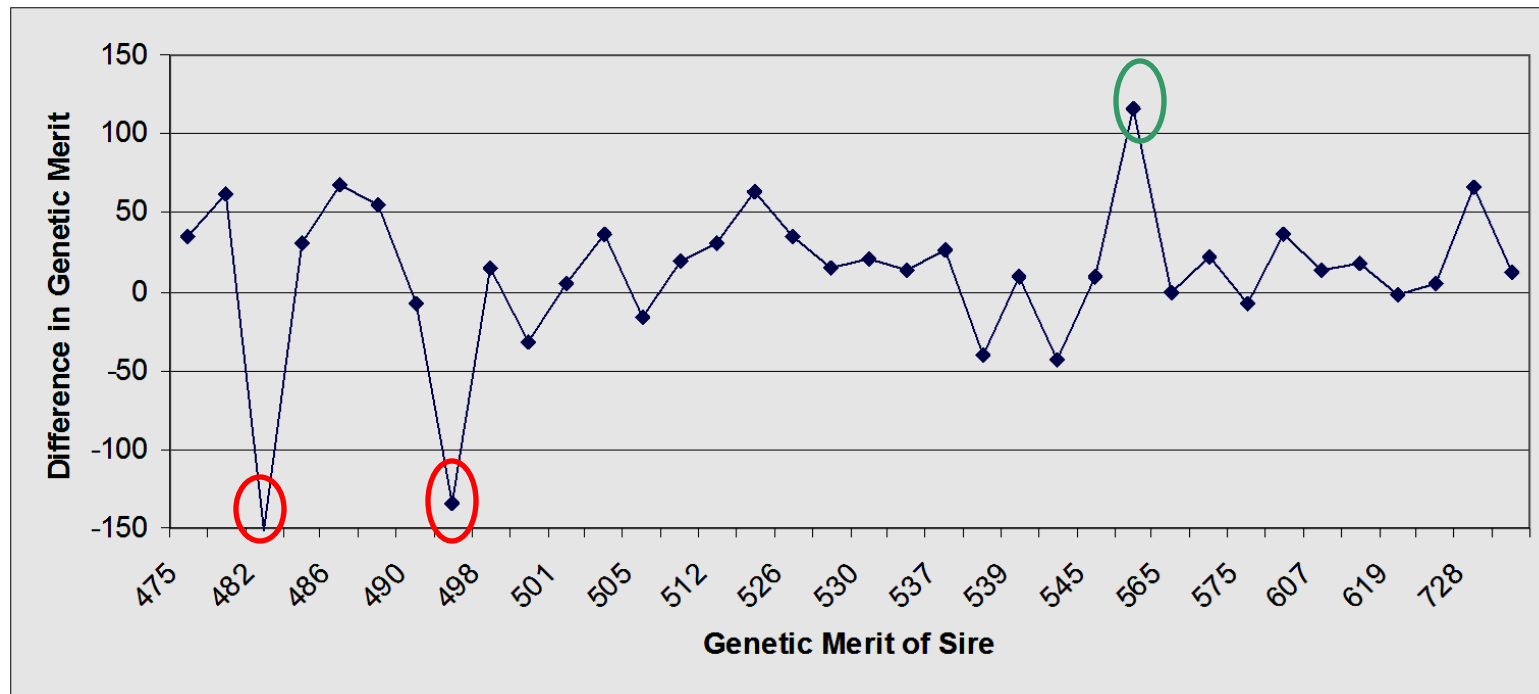
NM\$ of daughters with records

versus

NM\$ of daughters without records

Best daughters could be selected to obtain a record or Best daughters could be selected to be flushed

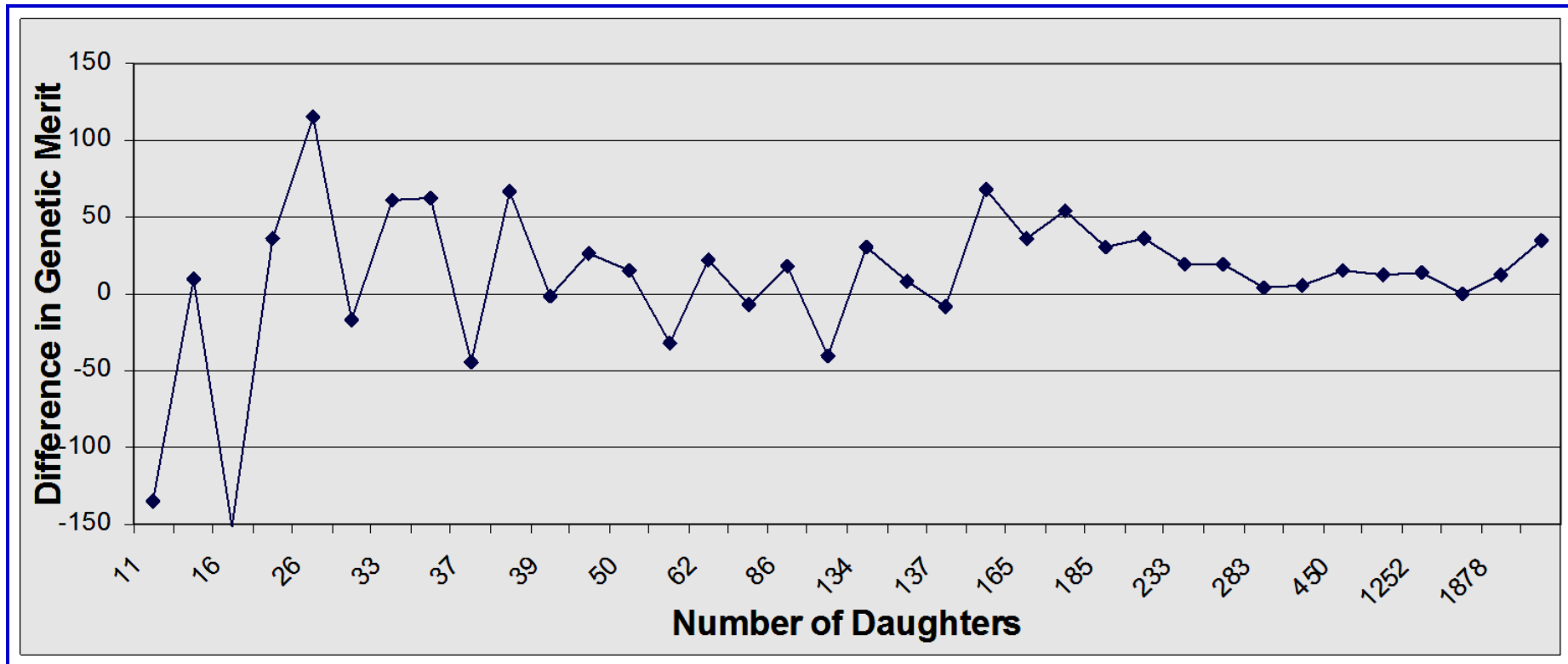
Best daughters
selected to
obtain a record?



Best daughters
being flushed?

No real pattern for the daughters of the top bulls

Largest differences are related to small NUMBER of daughters



Little evidence of Genomic Pre-Selection

Mates of Young Bulls

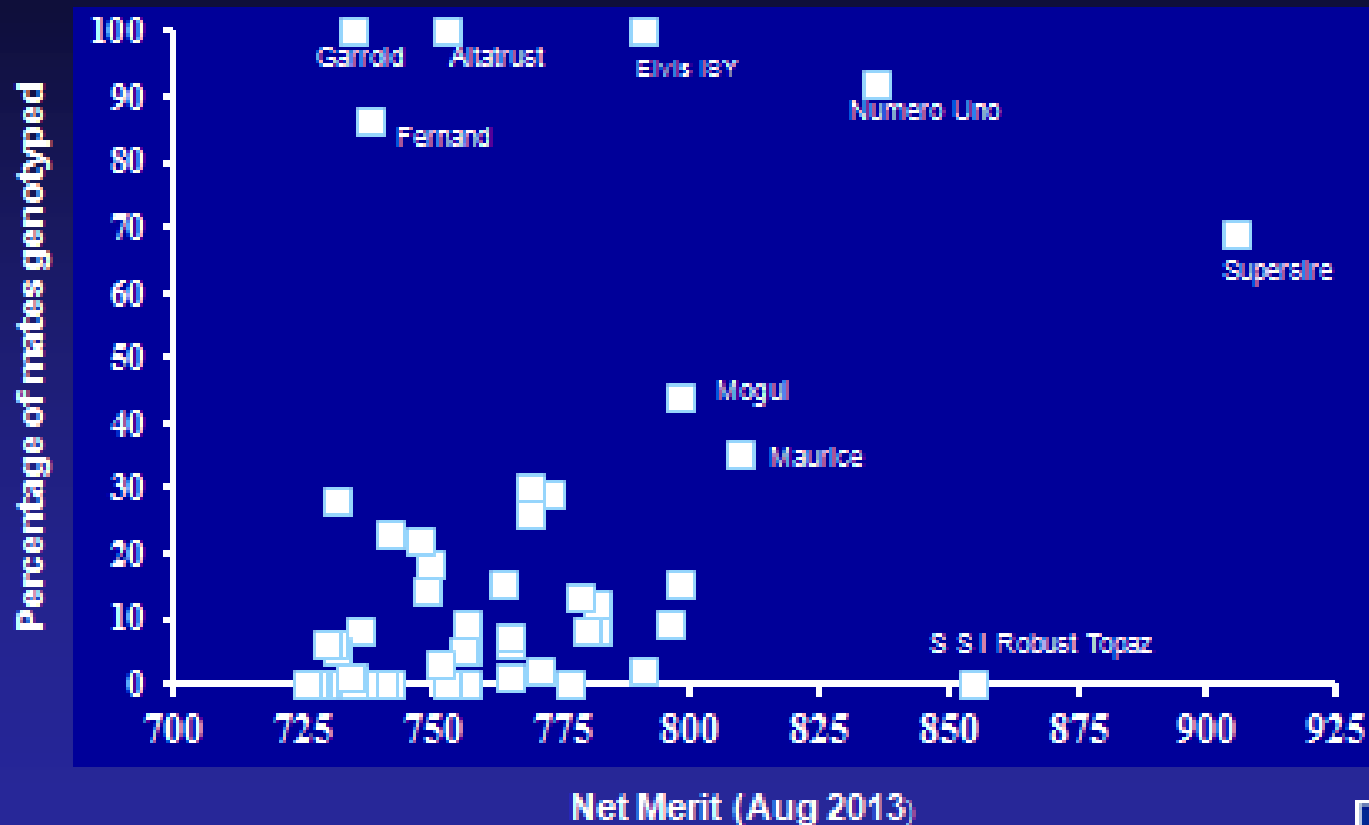
- Young bulls
 - Top 50, born 2009 and 2010
 - Study calves born in USA
 - Will pre-selected mates cause bias?



Opportunity for genomic pre-selection amongst young bulls

Born 2009 or later - No daughters with records

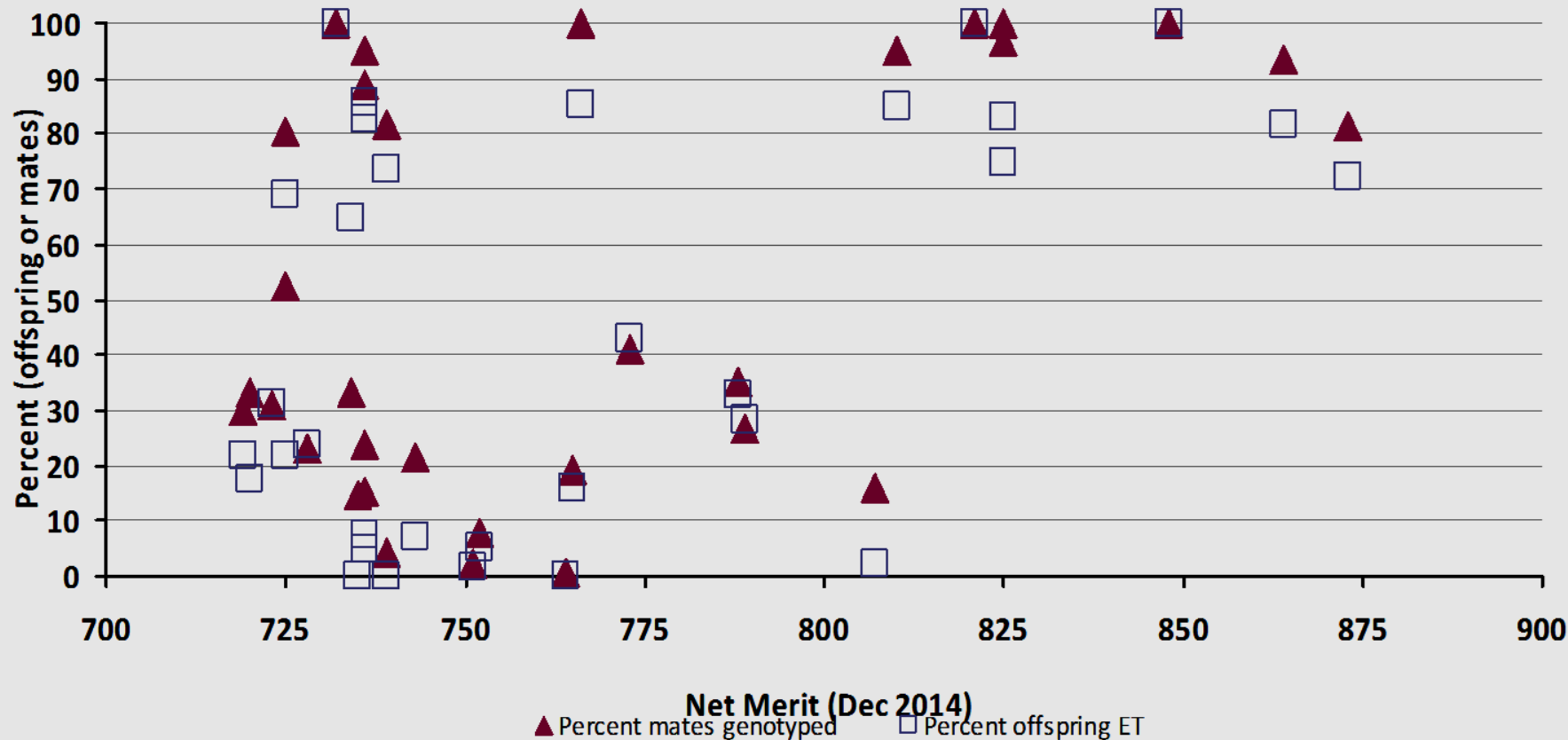
Percentage of Genotyped Mates Group 2 bulls ranked by NM\$



Year later - More opportunity for genomic pre-selection

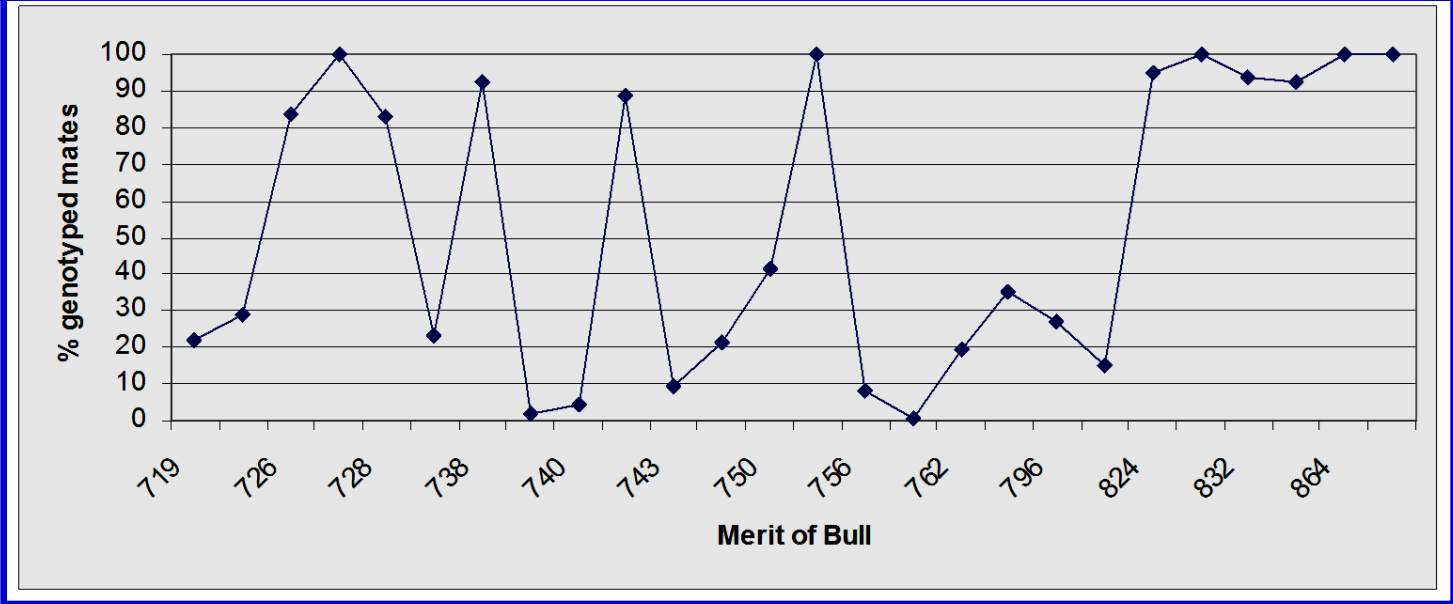
Born 2010 or later - No daughters with records

Percent mates genotyped and percent offspring born as result of ET for top young NM bulls, Dec 2014

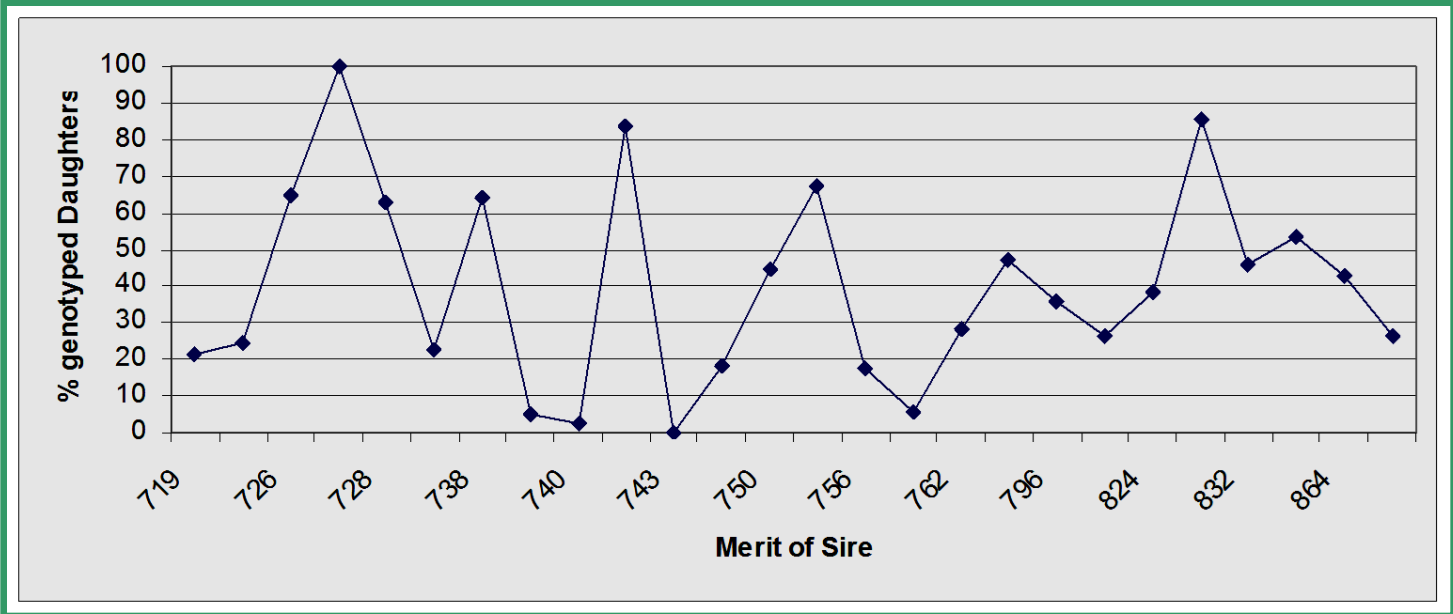


Percentage of genotyping not related to merit of Bull

Mates



Daughters



Young bulls are used quickly and in high amounts

Little evidence showing top bulls have been selectively bred to mates with higher than “recorded” Mendelian Sampling

August 2013

Group 2 Future Bias from Mates

Trait	Mean	SD	Min	Max
NM\$	8	9	0	33
Protein	0	0	0	1
Prod Life	.1	.1	.0	.5
Dtr Preg Rate	.1	.1	.0	.3
SCS	-.01	.01	-.03	.00
Final Score	.02	.03	-.01	.10
Udder Depth	.03	.04	-.01	.13

December 2014

Mean	SD	Min	Max
5	3	0	11
0	0	0	1
.1	.0	.0	.1
.1	.0	.0	.1
.00	.00	-.01	.00
-.02	.02	-.08	.00
-.01	.01	-.04	.02



Genomic PTAs are not much different than Traditional PTAs

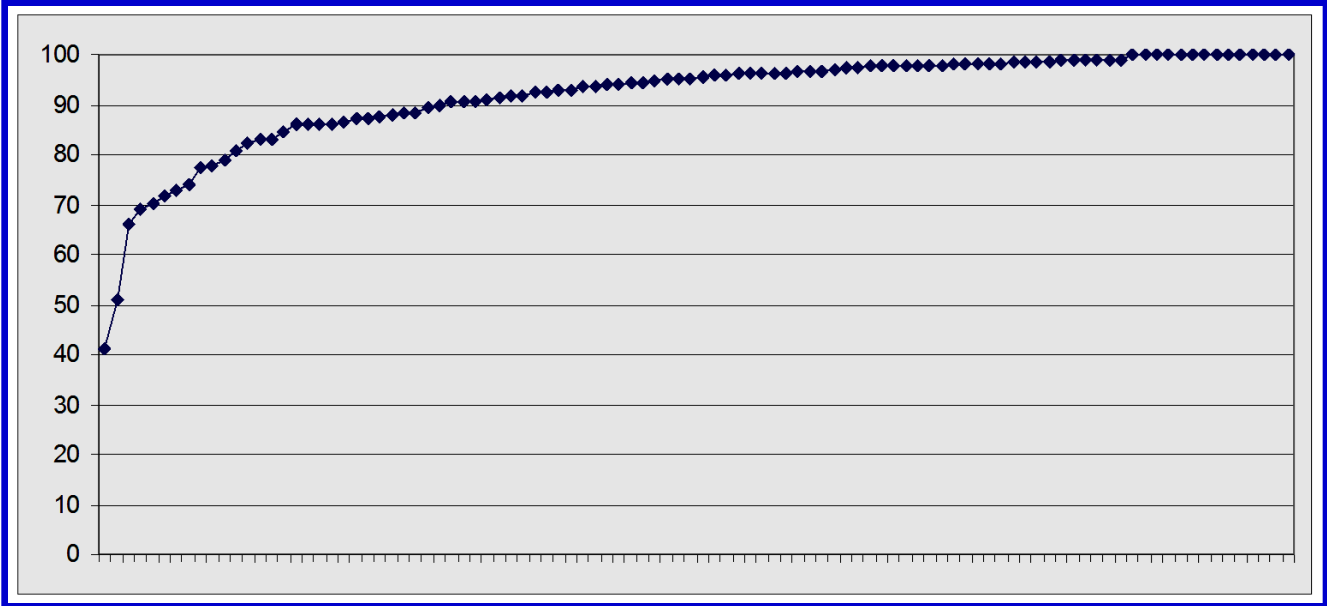
What about elite females?



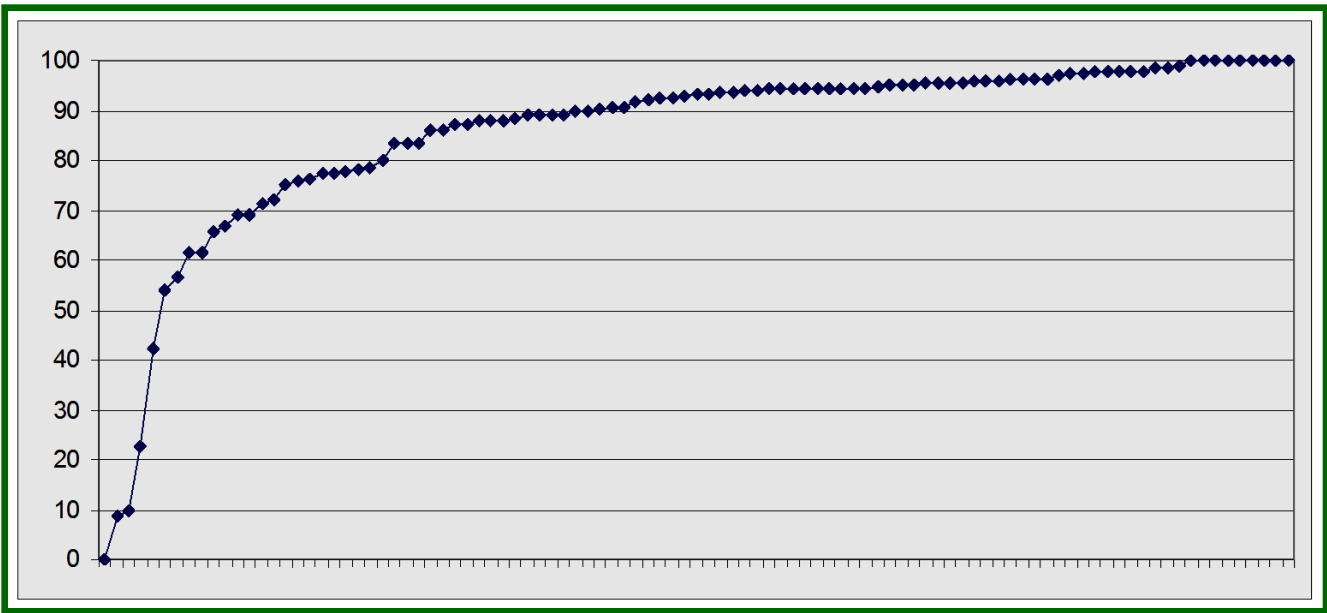
Dams* with most genotyped daughters.

* 40 or more genotyped daughters with 10 or more daughters with records

Percentage of daughters of dams that are genotyped



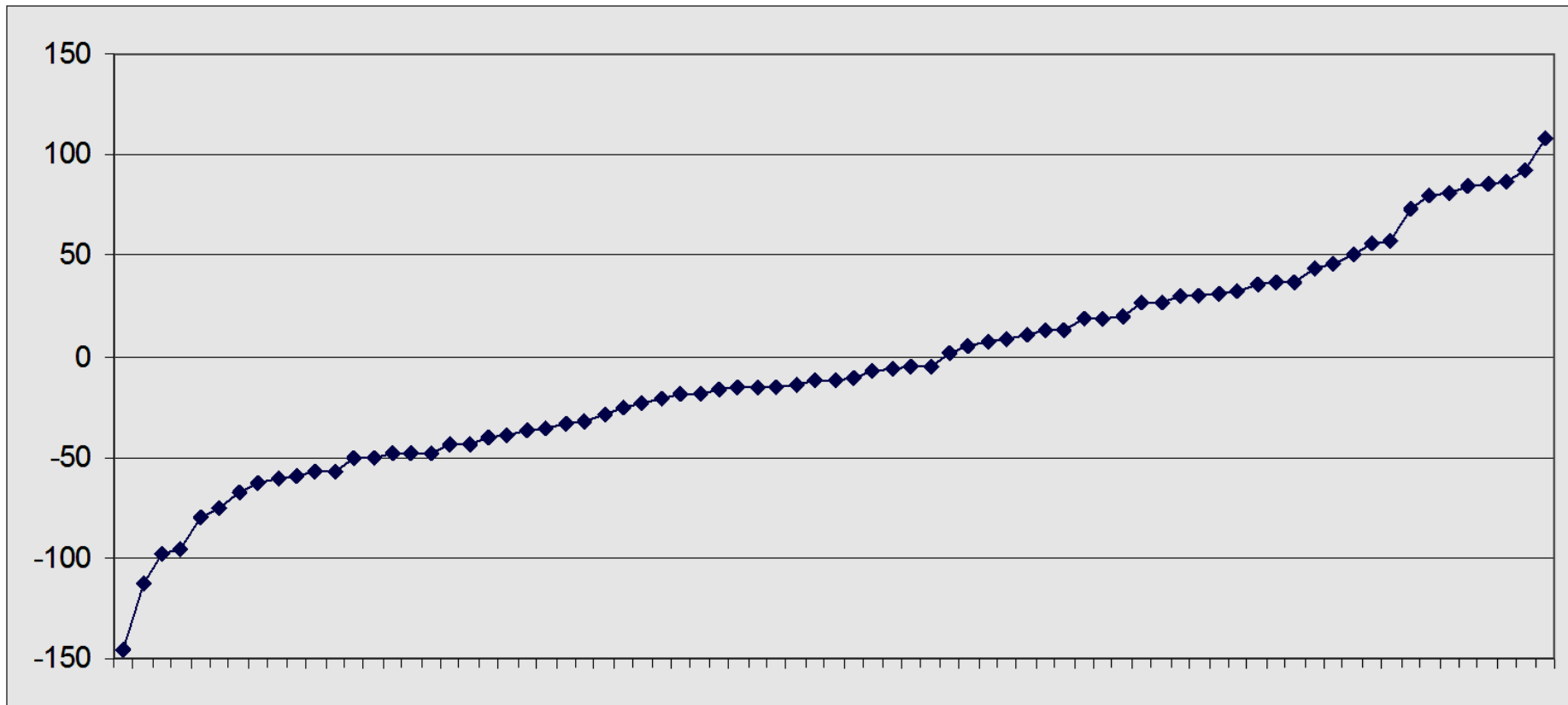
Percentage of sons of dams that are genotyped



NM\$ of daughters of dams with records

versus

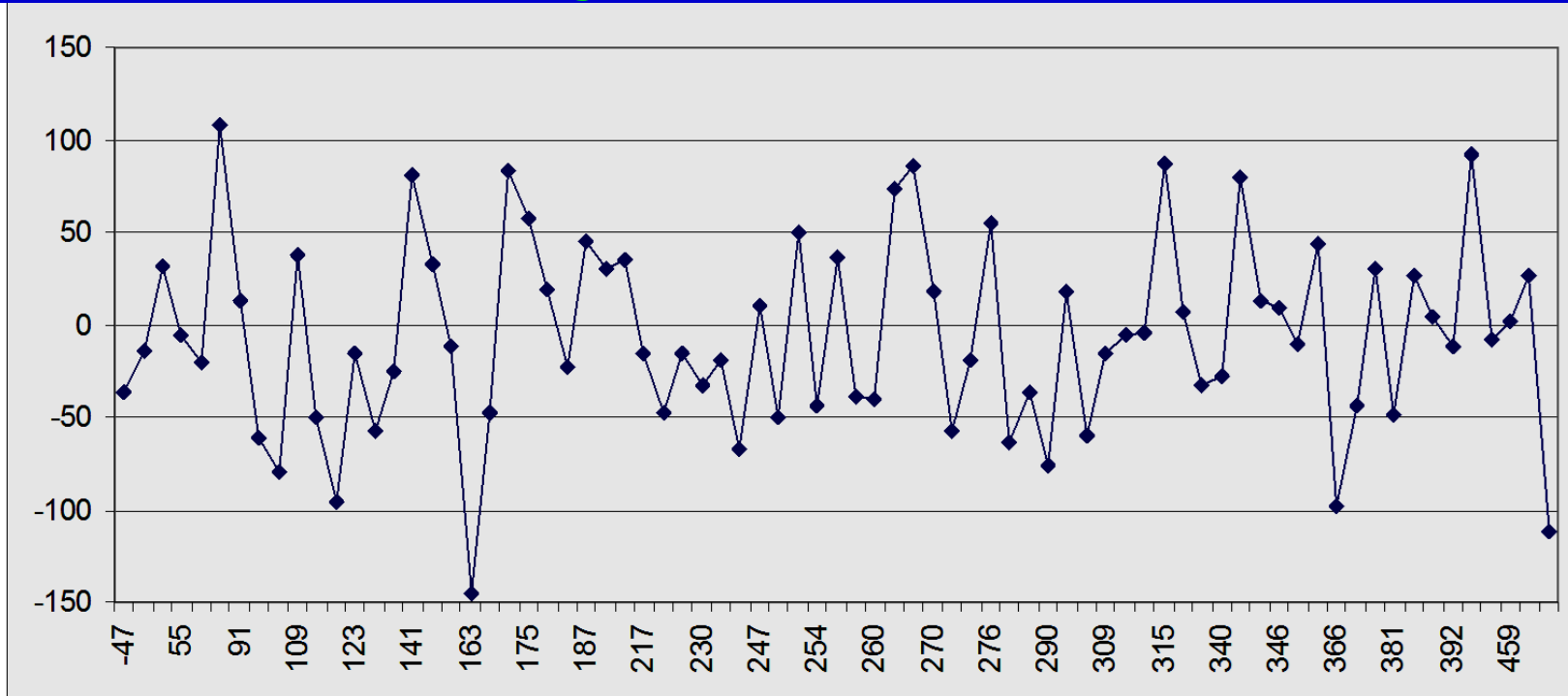
NM\$ of daughters of dams without records



Differences between groups is evenly distributed

No relationship between a “favorable” genomic test leading to a lactation record *(for either high or low families)*

Difference in Genetic Merit between daughters with a record vs. daughters without a record



NM\$ of daughters with a lactation

No evidence of genomic pre-selection

Potential bias for dams with highly selected sons

Some of this bias is removed by deregression

Large number of daughters dilute bias

Future Bias – Dams of Young Bulls

- Dams with ≥ 1 sampled son born 2008 to 2013
- Son selection differential = $\frac{\sum(GPTA - PA)}{\# \text{ of sons sampled}}$
- Dam's bias = $2 * \text{sons' selection differential} * (\text{DE from sampled sons}) / (\text{total conventional DE})$
 - DE = daughter equivalents or EDC



An extreme **2013**
6 sons selected
out of 29

An extreme **2014**
5 sons selected
out of 20

For illustration only

August 2013: **404**

Example Dam

HOU SA000065597532

- 29 sons genotyped, 6 selected, each will provide 5.4 DE
- Son selection differential for milk = $\Sigma(\text{GPTA} - \text{PA}) / 6 = 583$ pounds
- 30 daughters, each provide 1.5 DE
- 8.3 DE from PA, 7.8 from records
- Dam's future bias = $2 * 583 * 6 * 5.4 / [8.3 + 7.8 + 6 * 5.4 + 30 * 1.5] = 404$



December 2014: **275**

Example Dam

HOU SA000062496855

- 20 sons genotyped, 5 selected, each will provide 5.4 DE
- Son selection differential for milk = $\Sigma(\text{GPTA} - \text{PA}) / 5 = 418$ pounds
- 26 daughters, each provide 1.5 DE
- 8.3 DE from PA, 7.8 from records
- Dam's future bias = $2 * 418 * 5 * 5.4 / [8.3 + 7.8 + 5 * 5.4 + 26 * 1.5] = 275$



Illustration of potential bias from genomic tested sons

Bull dams of current top young bulls

August 2013

Expected Future Bias – Bull Dams

Trait	Mean	SD	Min	Max
NM\$	29	33	-124	156
Protein	1	3	-10	14
PL	.3	.5	-1.7	2.0
DPR	.1	.2	-.9	.9
SCS	-.01	.04	-.22	.14

December 2014

Mean	SD	Min	Max
24	29	-95	145
1	3	-9	12
.3	.5	-1.5	2.2
.1	.3	-1.3	1.2
-.01	.04	-.17	.13



Conclusions

- Opportunity for genomic pre-selection continues to grow.
- Our estimates of genomic pre-selection are an approximation: many relatives, mates of ancestors, and contemporaries impact a genetic evaluation.
- To date, there is little evidence to support that genomic pre-selection is a major source of bias.
- This research will help us evaluate the benefits of better genetic evaluations when they are implemented.

Acknowledgements

Phenotypes, genotypes, and pedigrees were provided by the Council on Dairy Cattle Breeding